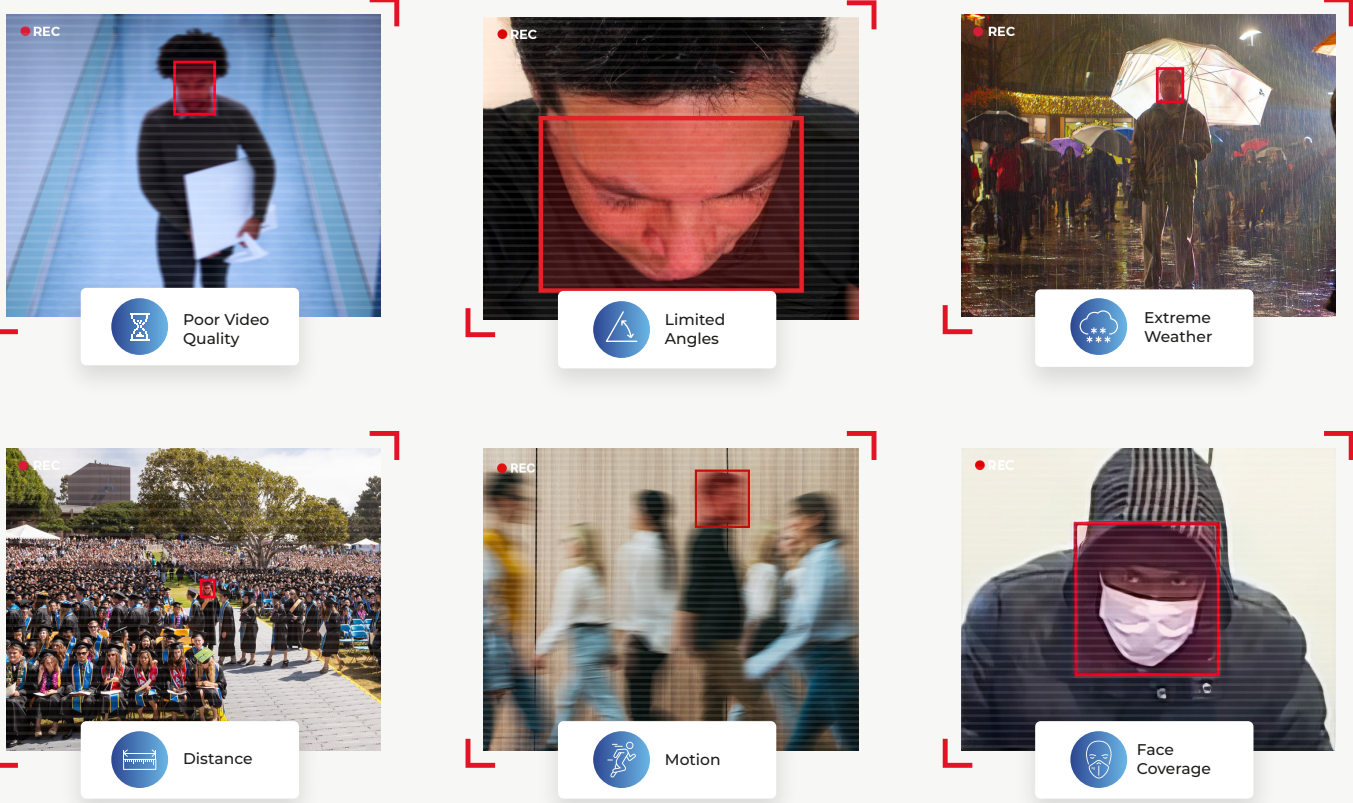


Facial Intelligence: Identify Specific People and Suspicious Patterns in Real-Time

Critical information often goes unnoticed within standard video footage. Corsight AI's Facial Intelligence platform identifies individuals from a watchlist and specific scenarios, even when the individuals involved are unknown in advance by analyzing duration and repetition patterns.

Unmatched Accuracy in Real World Condition

Recognized by the National Institute of Standards and Technology (NIST) for unparalleled accuracy and reliability, Corsight AI's technology is optimized for existing cameras. It delivers world-class performance under challenging conditions, including poor video quality, outdoor darkness, extreme weather, distance, facial coverage, motion, and disguises.



Real-Time Detection and Analysis

Corsight AI's platform goes beyond traditional facial recognition, offering real-time detection of specific scenarios:

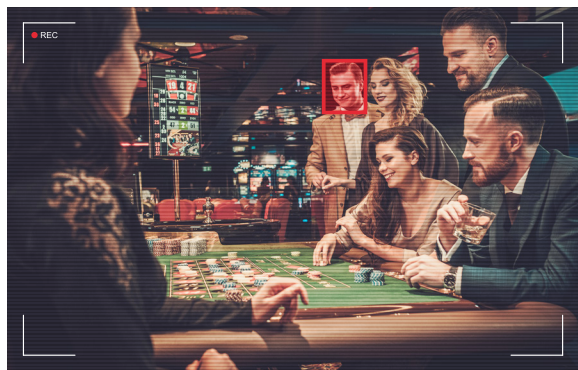
Shoplifting and Loitering:

Instantly identifies suspicious behaviors.



Identifying VIP Customers

Recognizes high-value clients upon entry.



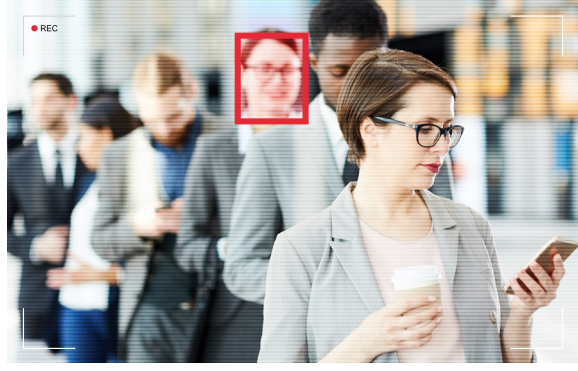
ATM Fraud Prevention:

Monitors ATMs to prevent fraud.



Line Monitoring:

Analyzes waiting times.

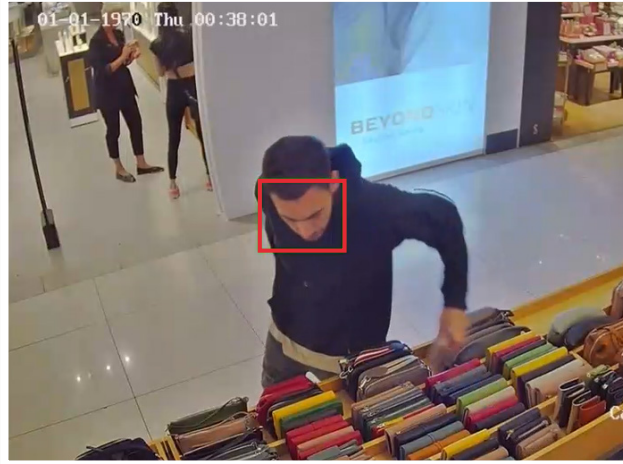
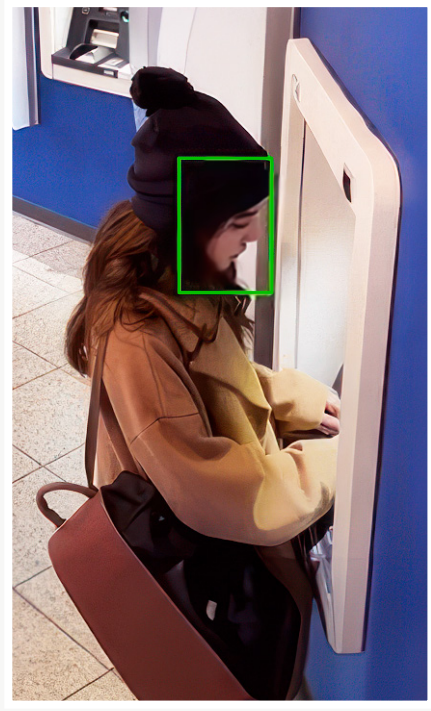


[Watch Corsight AI in Action](#)

A complete security solution:

- Watchlist Alerting:** Proactively notifies security personnel when individuals of interest appear on camera, enhancing situational awareness and response efficiency.
- Image Matching and Investigations:** Enhances after-the-fact investigations with robust image matching and forensic capabilities.
- Integration with other services and VMS:** Seamlessly integrates with video analytics services and Video Management Systems.
- Mobile App:** Ensures security and operational efficiency on the go.

Corsight AI's Facial Intelligence platform ensures that every detail is noticed, redefining security and service standards.



Trusted by Leading Organizations Worldwide

